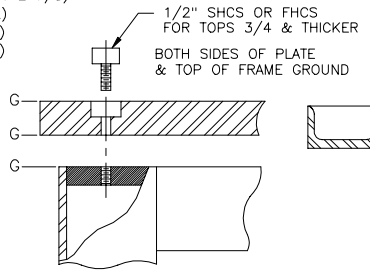


BASES UP TO 84 LONG

BASES 84 & LONGER

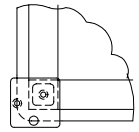
**OPTIONS**

- COOLANT TROUGH  
SPECIFY SIZE (1 1/2 DEEP X3, 2 1/2 DEEP X4, 4 DEEP X4) \_\_\_\_\_
- COOLANT TROUGH DRAIN (1 1/2 COUPLING) (SPECIFY LOCATION)
- BOLTED TOP PLATE
- TOP BURNOUTS PER DRAWINGS # \_\_\_\_\_
- STANDARD VIBRATION DAMPENING LEVELING PAD (X=2 7/8)
- HEAVY DUTY, ALL STEEL LEVELING PAD (X=2 1/2)
- BC-1 LOCKING CASTERS (4" DIAMETER) (Y=5 3/8)
- BC-2 LOCKING CASTERS (6" DIAMETER) (Y=7 1/2)
- SHELF - SPECIFY THICKNESS \_\_\_\_\_
- PANELS AND/OR DOORS - SPECIFY \_\_\_\_\_
- FRAME ONLY - SPECIFY SIZE \_\_\_\_\_
- MATTISON GRIND TOP - 63 MICRO OR BETTER
- FREE MACHINING STEEL TOP
- CAST ALUMINUM TOOL & JIG PLATE TOP
- 304 STAINLESS STEEL TOP
- MACHINE PER DRAWING # \_\_\_\_\_
- BLACK OXIDE BOLT ON TOP
- ANODIZE ALUMINUM TOP
- PAINT GREEN LACQUER PRIMER
- PAINT FEDERAL SAFETY BLUE ENAMEL
- CUSTOM PAINT - SPECIFY \_\_\_\_\_

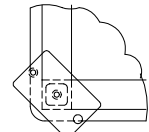


BOLT ON TOP

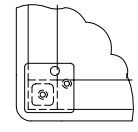
COOLANT TROUGH



STYLE A

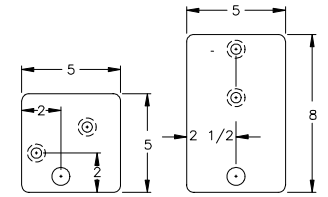


STYLE B



STYLE C

PAD STYLES



HOLES 3/4 FROM EDGE  
TWO 5/8-11 TAPPED HOLES  
ONE 11/16 DRILLED HOLE



**BRUTE MACHINE BASES®**

AMERICAN GRINDING & MACHINE COMPANY  
2000 N. MANGO AVE. CHICAGO, IL. 60639-2899  
(773) 889-4343 FAX: (773) 889-3781  
Outside Illinois call Toll Free (877) 988-4343

STANDARD SPECIFICATIONS		MODEL 200	DRAWING No.	REV-2
A36 STEEL			ENGINEER	CUSTOMER NAME
ALL WELDED CONSTRUCTION		DATE REV-1		
SHOT BLAST & PAINT GRAY ENAMEL				
BLANCHARD GRIND TOP CLEANUP				