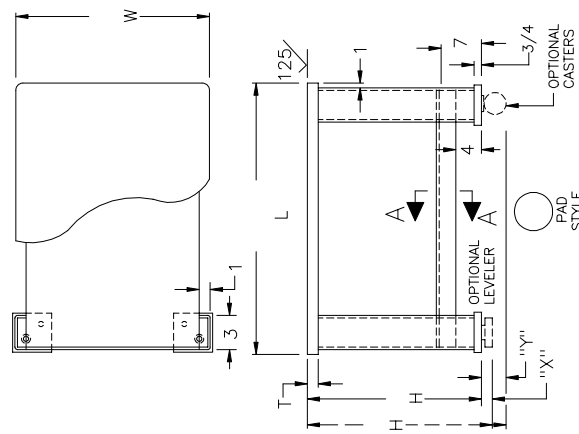
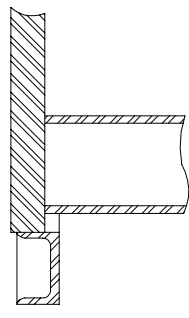


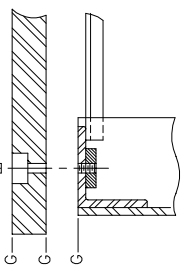
FORMED SIDE PANEL
WALL THICKNESS
1/16" OR 3/16"
SPECIFY _____



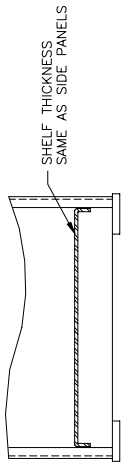
1/2" - 13 SHCS FOR TOPS 3/4" & THICKER
ALL OTHERS ATTACHED WITH FHCS



COOLANT TROUGH



BOLT ON TOP



SHELF THICKNESS
SAME AS SIDE PANELS

SECTION AA

SECTION BB

NOTE:
WHEN BASE IS ORDERED WITHOUT A TOP PLATE
TOP OF FRAME IS NOT GROUND UNLESS SPECIFIED
AND MOUNTING HOLES ARE NOT PROVIDED

OPTIONS

- COOLANT TROUGH
- SPECIFY SIZE (1 1/2 DEEP X3, 2 1/2 DEEP X4, 4 DEEP X4) _____
- COOLANT TROUGH DRAIN (1 1/2 COUPLING) (SPECIFY LOCATION)
- BOLTED TOP PLATE
- TOP BURNDOUTS PER DRAWINGS # _____
- STANDARD VIBRATION DAMPENING LEVELING PAD (X=2 7/8)
- HEAVY DUTY, ALL STEEL LEVELING PAD (X=2 1/2)
- BC-1 LOCKING CASTERS (4" DIAMETER) (Y=5 3/8)
- BC-2 LOCKING CASTERS (6" DIAMETER) (Y=7 1/2)
- PANELS AND/OR DOORS - SPECIFY _____
- FRAME ONLY - SPECIFY SIZE _____
- MATISSON GRIND TOP 63 MICRO OR BETTER
- FREE MACHINING STEEL TOP
- CAST ALUMINUM TOOL & JIG PLATE TOP
- 304 STAINLESS STEEL TOP
- MACHINE PER DRAWING # _____
- BLACK OXIDE BOLT ON TOP
- ANODIZE ALUMINUM TOP
- PAINT GREEN LACQUER PRIMER
- PAINT FEDERAL SAFETY BLUE ENAMEL
- CUSTOM PAINT - SPECIFY _____



BRUTE MACHINE BASES®
AMERICAN GRINDING & MACHINE COMPANY
2000 N. MANGO AVE. CHICAGO, IL 60639-2899
(773) 889-4343 FAX: (773) 889-3781
Outside Illinois call Toll Free (877) 988-4343

STANDARD SPECIFICATIONS		BRUTE LITE		DRAWING No.	REV--2
A36 STEEL		ALL WELDED CONSTRUCTION		ENGINEER	CUSTOMER NAME
SHOT BLAST & PAINT GRAY ENAMEL		BLANCHARD GRIND TOP CLEANUP		DATE	